

# 4<sup>th</sup> HALF YEARLY MONITORING REPORT ON MID DAY MEAL FOR THE STATE OF UTTARAKHAND (April to September, 2012)

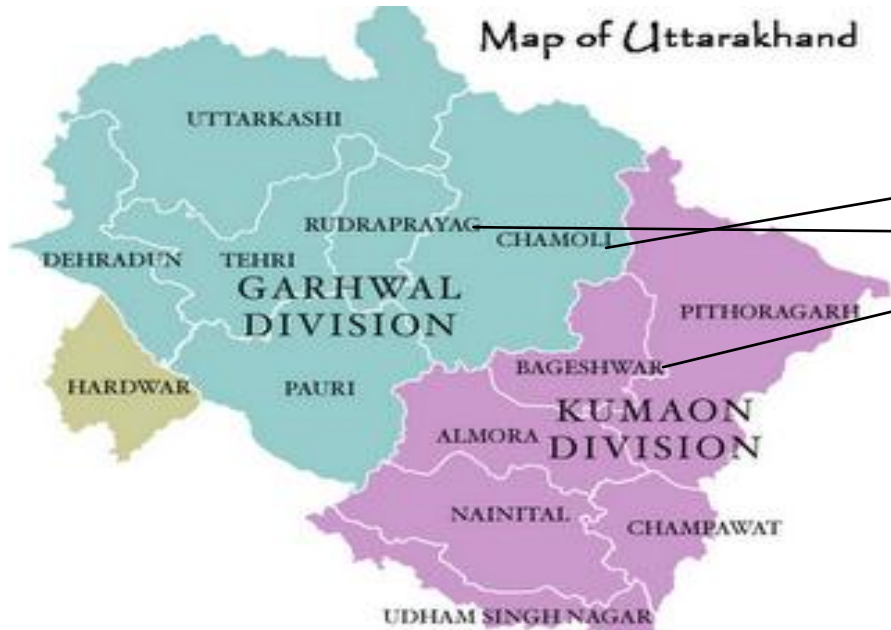


*Sponsored by:*



सत्यमेव जयते

**Government of India  
Ministry of Human Resource  
Development  
Department of Mid Day Meal  
GoI, New Delhi – 110001**



- DISTRICT COVERED**
- CHAMOLI
  - RUDRAPRAYAG
  - BAGESHWAR

*Conducted by:*

**NIAR**  
National Institute of Administrative Research  
Lal Bahadur Shastri National Academy of  
Administration  
Mussoorie – 248 179

## ***ACKNOWLEDGEMENT***

---

Monitoring in a broader sense in the SSA framework has been defined as a continuous assessment of progress, diagnosis of weakness and strength and provision infrastructure and thus to impact quality education. In Uttarakhand to access and analyze the status and to verify process and procedures undertaken for implementation of Mid - Day Meal during field visits is not an easy task without the active support of various stakeholders concerned with elementary education.

We express our sincere thanks to Ministry of Human Resources Development, Department of Mid - Day Meal Scheme, GOI, New Delhi for providing an opportunity as an external monitoring agency, SSA, Uttarakhand to NIAR, LBSNAA, Mussoorie.

We express our sincere thanks to Shri P.S. Jangpangi, State Project Director, SSA & MDM Uttarakhand, Shri R.K Kunwar, Addl. SPD and Shri P.S. Bisht, Joint Director, Mid - Day Meal Scheme, Uttarakhand for facilitating the process and coordination with NIAR.

We express my

Our very special thanks gratitude VEC members, teachers, students, parents especially mothers, district programme coordinator , BRCCs and CRCCs who helped during field visits and gathering information's on the attributes relevant to the education sector as well supported the participatory sharing/ learning approaches.

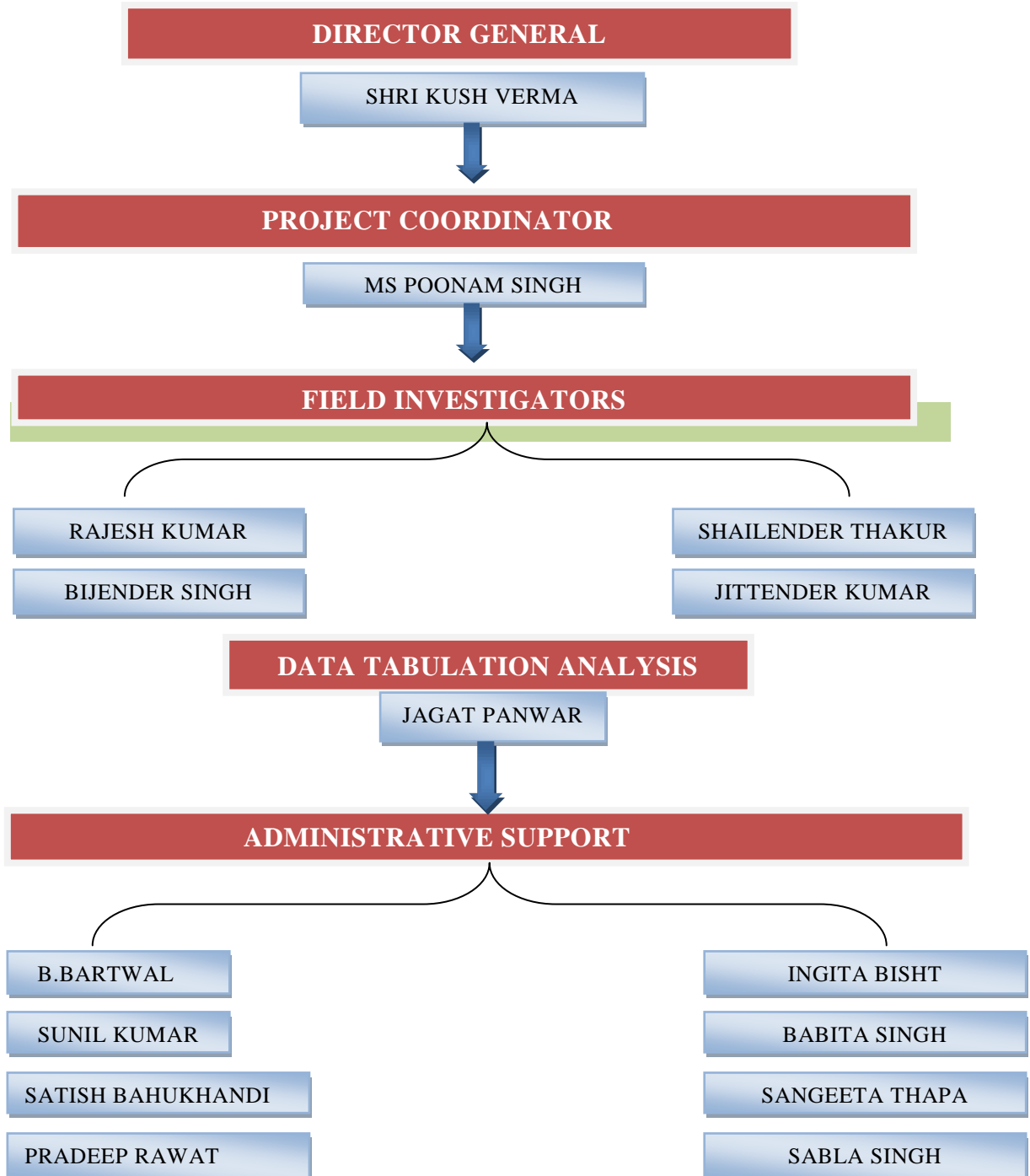
We express our sincere thanks to Shri Ramesh Chandre Director Research, NIAR, Shri Rajeev Moyal Research Associate for helping in report- writing, field investigators and Shri Ashok Dobhal, DEO, for helping in monitoring work and data collection. I would also like to express our special gratitude to all NIAR members.

Our sincere thanks to Shri Kush Verma, Director General, NIAR for providing support to conduct the monitoring process and guidelines.

We earnestly hope that this monitoring report will be helpful in providing the quality for education entitlements to the children and ultimately facilitate the educational development in its real sense.

**Monitoring team**

**MONITORING TEAM**



## List of Abbreviations

MDM	Mid Day Meals
MMS	Mid Day Meals Scheme
SDMC	School Development Monitoring Committees
CEO	Chief Executive Officer
AWP&B	Annual Work Plan & Budget
NPN	National Programme of Nutrition
FCI	Food Corporation of India
SSA	Sarva Sikha Abhiyan
NGO	Non Government Organisation
MIS	Management Information Systems
CAC	Civic Amenities Committees
KSQAO	Karnataka State Quality Assessment Organisation
EO	Education Officer
BEO	Block Education Officer
ADPI	Assistant Director Public Instruction
ZP	Zilla Panchayat
MMR	Maternal Mortality Ratio
DDPI	Deputy Director Public Instruction
APL	Above Poverty Line
EBB	Educationally Backward Blocks

## *CONTENT*

---

S.NO	Details	PAGE
1.	General Information	5
2.	<b>Consolidated Monitoring Report for the districts of CHAMOLI, RUDRAPRAYAG &amp; BAGESHWAR</b>	<b>6-12</b>
3.	DISTRICT CHAMOLI	<b>13-18</b>
4.	DISTRICT RUDRAPRAYAG	<b>19-24</b>
5.	DISTRICT BAGESHWAR	<b>25-31</b>
6.	<b>ANNEXURE 1: DETAILS ON VITAL PARAMETERS DISTRICTWISE</b> (Note : Details in % and Name of School with code in given in Annexure-1 )	<b>32-37</b>
7.	<b>ANNEXURE 2 : LIST OF SCHOOLS</b> (Note : Details in % and Name of School with code in given in Annexure-2 )	<b>38-43</b>
8.	<b>ANNEXURE -3 : DATA BASE</b>	<b>44-50</b>

## GENERAL INFORMATION

Sl. No.	Information	Details
1.	<ul style="list-style-type: none"> <li>Period of the report</li> </ul>	April, 2012 to September, 2012
2.	<ul style="list-style-type: none"> <li>No. of Districts allotted</li> </ul>	3
3.	<ul style="list-style-type: none"> <li>Districts' name</li> </ul>	Chamoli, Rudraprayad, and Bageshwar
4.	<ul style="list-style-type: none"> <li>Month of visit to the Districts / Schools</li> <li>(Information is to be given district wise</li> <li>i.e District 1, District 2, District 3 etc)</li> </ul>	April, 2012 to September, 2012
5.	<ul style="list-style-type: none"> <li>Total number of elementary schools (primary and upper primary to be counted separately) in the Districts Covered by MI (Information is to be given district -wise i.e. District 1, District 2, District 3 etc.)</li> </ul>	Yes
6.	<ul style="list-style-type: none"> <li>Number of elementary schools monitored (primary and upper primary to be counted separately) Information is to be given for district wise i.e. District 1, District 2, District 3 etc)</li> </ul>	<ul style="list-style-type: none"> <li>Chamoli – 27 Pry, 13 UPry</li> <li>Rudraprayag - 28 Pry, 12 UPry</li> <li>Bageshwar - 30 Pry, 10 UPry</li> </ul>
7.	<ul style="list-style-type: none"> <li><b>Items to be attached with the report:</b></li> <li>List of Schools with DISE code visited by MI.</li> <li>Copy of Office order, notification etc. discussed in the report.</li> <li>District Summary of the school reports.</li> <li>Any other relevant documents.</li> </ul>	Yes Yes Yes Data Base

## **Consolidated Monitoring Report for the districts of Chamoli, Rudraparyag and Bageshwar**

Monitoring and Supervision are an integral part of any programme and should be treated as a means to improve the quality and performance of that programme in a holistic manner. It must be transparent and dynamic. It is also true that quality performance is interlinked with proper monitoring and Supervision. National Institute of Administrative Research, LBSNAA, Mussoorie, has been assisting Ministry of Human Resource Development, Govt. of India and functioning as the monitoring institution for the Sarva Shiksha Abhiyan in the state of Uttaranchal over the last few years. In MDMS, monitoring of programme implementation is assigned a special significance.

Monitoring and Evaluation is important because:

- it provides the consolidated source of information showcasing project progress,
- it allows the programme managers to learn from each other's experiences, building on expertise and knowledge,
- it offers paths for learning and improvements,
- it provides a basis for questioning and testing assumptions,
- it provides a means for agencies seeking to learn from their experiences and to incorporate them into policy and practice,
- it provides a way to assess the crucial link between implementers and beneficiaries on the ground and decision-makers,

There are thirteen Districts in Uttarakhand and for the 4<sup>th</sup> phase of monitoring (April, 2012 to September, 2012); NIAR has selected three districts namely Chamoli, Rudraprayag, and Bageshwar district, Out of these three districts Bageshwar is from the Kumaun division and other two are from Garhwal division.

As per ToR 40 schools are to be selected from each district. Schools are selected by Stratified random sampling and by purposive sampling as well for coverage of special issues like CALP, and CWSN.

The methodology of the study is based on collection and analysis of primary data. Which has been collected through specially designed schedules for the monitoring purposes,

The population density of the plains is higher than the rest of the state and economic activities fairly diversified. The social structure of the region is also a bit different than the mountainous regions as there is considerable presence of minorities

like Muslims and Sikhs along with OBCs. All these factors were given due consideration in the research design of the study.

The mountainous region of the state exhibit ruggedness of terrain and entails a harsh condition of life for the local population. Subsistence agriculture is found to be the predominant occupation of people living here. Tourism and pilgrim activities are confined to certain places whereas industrial activities are conspicuously absent. The infrastructural facilities in this region are not well developed. Large number of villages is not connected with vehicular road too. Population density in this region is relatively low as villages are scattered and sparsely populated. The low population size of villages poses formidable obstacle in provision of social facilities. Moreover, any attempt to locate facilities at centrally located places also does not provide any solution. These factors have their decisive impact in provision of all social facilities, may it be a primary school or any other specialized facility. Keeping these factors into consideration one districts each from both the regions i.e. Garhwal and Kumaon were selected.

## Major findings in MDM

1. The information given in Table 1 reveals the status of serving of hot cooked Mid-Day Meal in the visited schools. A perusal of data make it clear that there were interruptions in serving of MDM in 10 schools in district Chamoli and in 3 schools in district Rudraprayag. The reason was non availability of food grains as stated by the teachers.

**Table 1**  
**Regular serving of hot cooked meal (N=40)**

District	Yes	No	Total
Chamoli	32 (80.0)	8 (20.0)	40 (100.0)
Rudraparyag	37 (92.5)	3 (7.5)	40 (100.0)
Bageshwar	40 (100.0)	-	40 (100.0)

*(Figures in parenthesis are percentage to total)*

The enrollment figures reveals that all the enrolled children have opted for mid day meal. There are not much variations in the attendance pattern of children on the day of visit with that of the previous day to visit. However, the attendance of children



is very low with 58% in Chamoli vis-à-vis more than 89 percent in Rudraprayag and Bageshwar.

**Table 2**  
**Trends of enrollment**

District	Total enrollment	No. of Children opted for Mid Day Meal	No. of children attending the school on the day of visit	No. of children availing MDM as per MDM Register	No. of children actually availing MDM on the day of visit	No. of children availed MDM on the previous day.
Chamoli	1401 (100.0)	1314 (93.8)	812 (57.9)	812 (57.9)	812 (57.9)	897 (64.0)
Rudraparyag	1530 (100.0)	1530 (100.0)	1288 (84.1)	1288 (84.1)	1288 (84.1)	1365 (89.2)
Bageshwar	1581 (100.0)	1581 (100.0)	1386 (87.7)	1386 (87.7)	1386 (87.7)	1414 (89.4)

*(Figures in parenthesis are percentage to total)*

## 2. Foodgrain

A perusal of table 3 reveals that food grains were available with 95% and 97% schools in Rudraprayag and Bageshwar respectively, whereas food grains were not received regularly in 305 schools and these schools were managing the MDM by borrowing it from the nearby schools of fair price shops or Mid day meal was not served in these schools due to non-availability of food grains.

**Table 3**  
**Receipt of the food grains by the school**

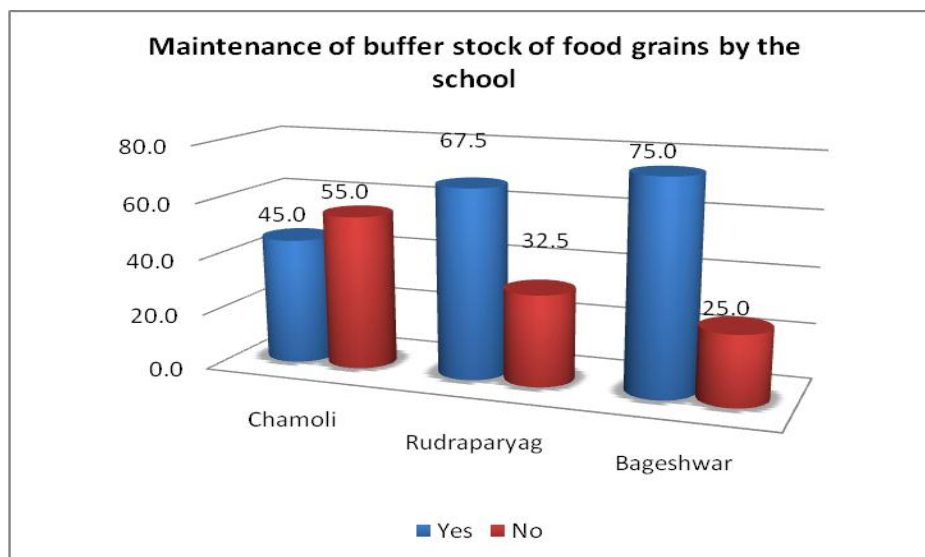
District	Yes	No	Total
Chamoli	28 (70.0)	12 (30.0)	40 (100.0)
Rudraprayag	38 (95.0)	2 (5.0)	40 (100.0)
Bageshwar	39 (97.5)	1 (2.5)	40 (100.0)

Table 4 indicates the position of maintenance of buffer stock at school level.

Buffer stock of one month of foodgrains was maintained in 75% schools in Bageshwar, 68% schools in Rudraprayag and in only 45% schools in Chamoli.

**Table 4**  
**Maintenance of buffer stock of food grains by the school**

<b>District</b>	<b>Yes</b>	<b>No</b>	<b>Total</b>
Chamoli	18 (45.0)	22 (55.0)	40 (100.0)
Rudraprayag	27 (67.5)	13 (32.5)	40 (100.0)
Bageshwar	30 (75.0)	10 (25.0)	40 (100.0)



The delivery of foodgrains at the school level is an area of concern in the hilly districts, where 23% - 50% schools have not received foodgrains at the door steps of schools (Table 5). Whereas the Govt. of India provides transportation assistance of foodgrains from FCI godown to school level which includes the head load for transporting the food grains in case the schools is located at some distance from the motor head.

**Table 5**  
**If the food grains are delivered at the school**

<b>District</b>	<b>Yes</b>	<b>No</b>	<b>Total</b>
Chamoli	25 (62.5)	15 (37.5)	40 (100.0)
Rudraprayag	20 (50.0)	20 (50.0)	40 (100.0)
Bageshwar	31 (77.5)	9 (22.5)	40 (100.0)

The quality of foodgrains was generally observed good except 19 schools in district Chamoli and 10 schools each in Rudraprayag and Bageshwar. This is an area of concern and requires urgent attention of the authorities.

**Table 6**  
**Quality of food grains**

<b>District</b>	<b>Good</b>	<b>Not good</b>	<b>Total</b>
Chamoli	21 (52.5)	19 (47.5)	40 (100.0)
Rudraprayag	30 (75.0)	10 (25.0)	40 (100.0)
Bageshwar	30 (75.0)	10 (25.0)	40 (100.0)

### 3. Cooking cost

Prepositioning of resources at implementing agency level is very crucial for proper implementation of mid day meal scheme. A perusal of table 7 reveals that releasing of cooking cost is a problematic area in Chamoli district, where 17 percent schools have not received the cooking cost in advance.

**Table 7**  
**Receipt of cooking cost in advance**

<b>District</b>	<b>Yes</b>	<b>No</b>	<b>Total</b>
Chamoli	33 (82.5)	7 (17.5)	40 (100.0)
Rudraprayag	38 (95.0)	2 (5.0)	40 (100.0)
Bageshwar	39 (97.5)	1 (2.5)	40 (100.0)

### 4. School Health Programme

School health programme is very important component of National Rural Health Scheme and also very crucial for Mid Day Meal Scheme. The data in table 8 reveals that health cards were maintained in only about 22% schools in Chamoli, and Bageshwar districts, the situation is relatively better in district Rudraprayag. The situation is pretty good in district DehraDun where health cards have been maintained in more than 90% schools.

**Table 8**  
**Maintenance of School Health Card**

<b>District</b>	<b>Yes</b>	<b>No</b>	<b>Total</b>
Chamoli	9 (22.5)	31 (77.5)	40 (100.0)
Rudraprayag	30 (75.0)	10 (25.0)	40 (100.0)
Bageshwar	9 (22.5)	31 (77.5)	40 (100.0)

The information regarding frequency of health check ups is given in table 9 which reveals, that no health checkups have been carried out in 13 schools in Chamoli, 10 schools in Rudraprayag, and in 9 schools in Bageshwar. The schools which were covered under health check-ups, most of these schools health checkups have been carried out on annual basis.

**Table 9**  
**Frequency of health check ups**

<b>District</b>	<b>Quarterly</b>	<b>Half yearly</b>	<b>Yearly</b>	<b>No check up</b>	<b>Total</b>
Chamoli	-	-	27 (67.5)	13 (32.5)	40 (100.0)
Rudraparyag	6 (15.0)	1 (2.5)	23 (57.5)	10 (25.0)	40 (100.0)
Bageshwar	1 (2.5)	-	30 (75.0)	9 (22.5)	40 (100.0)

The guidelines provide that every child should be provided IFA tablets, Deworming tablets and Vitamin A dosage and micronutrients as per the prescribed norms. However, the information in table 10 does not portray any rosy picture, as only about 40% children have been provided with de-worming tablets, only 62% have received IFA tablets and about 50% have been administered Vitamin A dosage.

**Table 10**  
**Distribution of supplementary tablets etc.**

<b>District</b>	<b>Micronutrients</b>		<b>Vit. A dosage</b>		<b>Iron folic acid</b>		<b>De-worming tablets</b>	
	<b>Yes</b>	<b>No</b>	<b>Yes</b>	<b>No</b>	<b>Yes</b>	<b>No</b>	<b>Yes</b>	<b>No</b>
Chamoli	24 (60.0)	16 (40.0)	24 (60.0)	16 (40.0)	26 (65.0)	14 (35.0)	18 (45.0)	22 (55.0)
Rudraprayag	28 (70.0)	12 (30.0)	20 (50.0)	20 (50.0)	24 (60.0)	16 (40.0)	4 (10.0)	36 (90.0)
Bageshwar	9 (22.5)	31 (77.5)	14 (35.0)	26 (65.0)	25 (62.5)	15 (37.5)	24 (60.0)	16 (40.0)

## 5. Cook-cum-helper

The cook-cum-helpers have been engaged as per norms in most of the schools. Most of the cook-cum-helpers belongs to the SC, ST and OBC category. However, the data given in table 11 regarding payment reveals that payment of honorarium to cook-cum-helpers is regular in most of the schools except district Chamoli.

**Table 8**  
**Regularity in payment of honorarium to cook cum helper**

<b>District</b>	<b>Regular</b>	<b>Irregular</b>	<b>Total</b>
Chamoli	5 (12.5)	35 (87.5)	40 (100.0)
Rudraprayag	40 (100.0)	-	40 (100.0)
Bageshwar	37 (92.5)	3 (7.5)	40 (100.0)

## 6. Safety and hygiene

The children were encouraged to wash hands before and after eating the food in almost all the schools, which is very positive sign.

**Table 20**  
**Children are encouraged to wash hands before and after taking the meal**

<b>District</b>	<b>Yes</b>	<b>No</b>	<b>Total</b>
Chamoli	36 (90.0)	4 (10.0)	40 (100.0)
Rudraparyag	40 (100.0)	-	40 (100.0)
Bageshwar	39 (97.5)	1 (2.5)	40 (100.0)

## Mid-Day Meal Scheme:

### District: Chamoli

(i)	<b>Name of the Monitoring Institution</b>	National Institute of Administrative Research, LBSNAA, Mussoorie
(ii)	<b>Period of the report</b>	April, 2012– September, 2012
(iii)	<b>Name of the District</b>	Chamoli
(iv)	<b>Date of visit to the Districts/EGS/Schools</b>	-

1	<b><u>REGULARITY IN SERVING MEAL:</u></b>			Students, Teachers & Parents	
	Whether the school is serving hot cooked meal daily? If there was interruption, what was the extent and reasons for the same?				
All visited schools were serving hot cooked mid day meal to all the students present in the school. However, the teachers inform in 8 schools that there were instances when mid day meal was not served due to non-availability of food grains.					
2	<b><u>TRENDS:</u></b>			School level registers, MDM Registers Head Teachers, Schools level MDM functionaries / Observation of the monitoring team.	
	<b>No.</b>	<b>Details</b>	<b>Day previous to date of visit</b>		<b>On the day of visit</b>
	i.	<b>Enrollment</b>	1401		1401
	ii.	<b>No. of children attending the school on the day of visit</b>	897		812
	iii.	<b>No. of children availing MDM as per MDM Register</b>	897		812
	v.	<b>No. of children actually availing MDM on the day of visit</b>		812	
3	<b><u>REGULARITY IN DELIVERING FOOD GRAINS TO SCHOOL LEVEL:</u></b>			School level registers, MDM Registers, Head Teacher, School level MDM functionaries.	
	<ul style="list-style-type: none"> <li>Is school receiving food grain regularly? If there is delay in delivering food grains, what is the extent of delay and reasons for the same?</li> </ul>				
28 out of the visited 40 schools were receiving food grain regularly .					

	<ul style="list-style-type: none"> <li>• <b>Is buffer stock of one-month's requirement is maintained?</b></li> </ul>	School level registers, MDM Registers, Head Teacher, School level MDM functionaries	
Buffer stock was maintained in 45% of the visited schools.			
	<ul style="list-style-type: none"> <li>• <b>Is the food grains delivered at the school?</b></li> </ul>	School level registers, MDM Registers, Head Teacher, School level MDM functionaries	
Food grains were delivered at the school doorsteps in only 25 of the visited schools.			
4	<p><b><u>REGULARITY IN DELIVERING COOKING COST TO SCHOOL LEVEL:</u></b></p> <ul style="list-style-type: none"> <li>• <b>Is school receiving cooking cost in advance regularly? If there is delay in delivering cooking cost what is the extent of delay and reasons for it?</b></li> </ul>	School level registers, MDM Registers, Head Teacher, School level MDM functionaries.	
	33 out of 40 sampled schools have received cooking cost in advance most of the times.		
	<ul style="list-style-type: none"> <li>• <b>In case of delay, how schools manage to ensure that there is no disruption in the feeding programme?</b></li> </ul>	School level registers, MDM Registers, Head Teacher, School level MDM functionaries.	
	In such situation the teachers manage it on credit basis from local ration shopkeeper or from their own pocket.		
	<ul style="list-style-type: none"> <li>• <b>Is cooking cost paid by Cash or through banking channel?</b></li> </ul>	School level registers, MDM Registers, Head Teacher, School level MDM functionaries.	
Through banking channel (by cheque).			
5	<p><b><u>SOCIAL EQUITY:</u></b></p> <p><b>Did you observe any gender or caste or community discrimination in cooking or serving or seating arrangements?</b></p>	Observations	
	There was no discrimination noticed among all the sample schools visited by MI.		

6	<p><b><u>VARIETY OF MENU:</u></b></p> <ul style="list-style-type: none"> <li>• <b>Has the school displayed its weekly menu, and is it able to adhere to the menu displayed?</b></li> </ul>	Observations and discussion with children teachers, parents, VEC members, Gram Panchayat members and cooks.
	Menu was displayed in 90% of the visited schools on the notice board or wall and it was adhere to in 48% of the visited schools.	
7	<ul style="list-style-type: none"> <li>• <b>Is there variety in the food served or is the same food served daily?</b></li> </ul>	Observations and discussion with children teachers, parents, VEC members, Gram Panchayat members and cooks.
	Generally the schools serve rice and pulse everyday but a little variety in serving food was noticed in all the visited schools.	
	<ul style="list-style-type: none"> <li>• <b>Dose the daily menu include rice / wheat preparation, dal and vegetables?</b></li> </ul>	Observations and discussion with children teachers, parents, VEC members, Gram Panchayat members and cooks.
Rice, Dal and sometimes vegetables are included in daily menu.		
8	<p><b><u>QUALITY &amp; QUANTITY OF MEAL:</u></b></p> <p><b>Feedback from children on</b></p> <ul style="list-style-type: none"> <li>• <b>Quality of meal:</b></li> </ul>	Observations of Investigation during MDM service
	The overall quality of meal was generally good in all the visited school, barring few instances where the Dal was a bit more watery.	
	<ul style="list-style-type: none"> <li>• <b>Quantity of meal:</b></li> </ul>	Observations of Investigation during MDM service
	Quantity of mid day meal was noticed sufficient	
	<ul style="list-style-type: none"> <li>• <b>{If children were not happy Please give reasons and suggestions to improve.}</b></li> </ul>	Observations of Investigation during MDM service
Children were happy with the quality and quantity of food.		



9	<b><u>SUPPLEMENTARY:</u></b>	Teachers, Students, School Record
	<ul style="list-style-type: none"> <li>• Whether children are given micronutrients (Iron, folic acid, vitamin – A dosage) and de-worming medicine periodically?</li> </ul>	
	Micronutrients (Iron, folic acid, vitamin – A dosage) and de-worming medicine were distributed in 45% - 60% schools. School health cards were maintained in only 9 schools.	
	<ul style="list-style-type: none"> <li>• Who administers these medicines and at what frequency?</li> </ul>	Teachers, Students, School Record
	Nearest Govt. doctor or ANM. Administers them mostly on yearly basis.	
10	<ul style="list-style-type: none"> <li>• Is there school Health Card maintained for each child?</li> </ul>	Teachers, Students, School Record
	School health cards were maintained in 22% schools.	
	<b><u>STATUS OF COOKS:</u></b>	Observations and discussion with children teachers, parents, VEC members, Gram Panchayat members and cooks.
	<ul style="list-style-type: none"> <li>• Who cooks and serves the meal? (Cook/helper appointed by the Department or Self Help Group, or NGO or Contractor)</li> </ul>	
	Cook cum helpers engaged by department and SMC serve the meals.	
10	( ii ) Is the number of cooks and helpers adequate to meet the requirement of the school?	Observations and discussion with children teachers, parents, VEC members, Gram Panchayat members and cooks.
	Yes, the cook cum helpers were adequate to meet the requirement of the school.	
	( iii )What is remuneration paid to cooks/helpers?	Observations and discussion with children teachers, parents, VEC members, Gram Panchayat members and cooks.
	The cooks are paid Rs. 1500/- per month.	
	( iv).Are the remuneration paid to cooks/helpers regularly?	Observations and discussion with children teachers, parents, VEC members, Gram Panchayat members and cooks.
	The cook cum helpers in 13% of the visited schools informed that they were receiving the honorarium regularly. In rest 87% schools the cook cum helpers have not received the honorarium regularly and generally there was a delay of 2-3 months.	
	<ul style="list-style-type: none"> <li>• Social Composition of cooks /helpers? (SC/ST/OBC/Minority)</li> </ul>	Observations and discussion with children teachers, parents, VEC members, Gram Panchayat members and cooks.
Cook cum helpers in most of the schools were belonged to SC and OBC category.		

11	<p><b><u>INFRASTRUCTURE:</u></b></p> <p><b>Is a pucca kitchen shed-cum-store:</b></p> <ul style="list-style-type: none"> <li>• <b>Constructed and in use</b></li> <li>• <b>Constructed but not in use under</b></li> <li>• <b>Under construction</b></li> <li>• <b>Sanctioned, but constructed not started</b></li> <li>• <b>Not sanctioned</b></li> </ul> <p><b>Any other (specify)</b></p>	School records, discussion with head teacher, teacher, VEC, Gram Panchayat members.
	Pucca kitchen cum store were available in 95% of the visited schools, kachcha kitchen sheds were available in 5% of the visited schools.	
12	<p><b>In case the pucca kitchen shed is not available, where is the food being cooked and where are the foodgrains/other ingredients being stored.</b></p>	Discussion with head teacher, teacher, VEC, Gram Panchayat members, Observation
	In the sample schools where pucca kitchen is not available food is cooked either in open space in verandah and food grains/other ingredients are stored in a temporary kitchen cum shed provided by state govt. or in the head teachers office.	
13	<p><b>Whether potable water is available for cooking and drinking purpose?</b></p>	<b>-do-</b>
	Yes, drinking water facility were available in all the visited schools.	
14	<p><b>Whether utensils used for cooking food are adequate?</b></p>	Teachers/Organizer of MDM Programme
	Yes, adequate kitchen devices were available in all the visited schools.	
15	<p><b>What is the kind of fuel used? (Gas based/firewood etc.)</b></p>	Observation
	LPG was used in 10% visited schools and in rest of the schools firewood etc. was used for preparing mid day meal.	
16	<p><b><u>SAFETY &amp; HYGIENE:</u></b></p> <ul style="list-style-type: none"> <li>• <b>General Impression of the environment, Safety and hygiene:</b></li> </ul>	Observation
	During the visit it was noticed that only 58% of the visited school were fulfilling the indicator of cooking and serving the food in neat, hygienic as well as safe conditions.	
	<p><b>ii. Are children encouraged to wash hands before and after eating</b></p>	Observation
	Children were encouraged to wash hands before and after eating in 90% of the visited schools.	
	<p><b>iii. Do the children partake meals in an orderly manner?</b></p>	Observation
	Yes, children in most of the visited schools were taking mid day meal in orderly manner.	

	<b>iv. Conservation of water?</b>	Observation
	Efforts were made in all the schools to conserve water and teachers encourage students to save water.	
	<b>v. Is the cooking process and storage of fuel safe, not posing any fire hazard?</b>	Observation
	In about 58% of the visited schools visited MI found that the cooking process and fuel storage was and safe was not posing fire hazard. However, in 42% of the visited schools it was not safe as the meals were either cooked in open or the makeshift kitchen was so small and very near to the classrooms and there is strong need for safe storage of fuel alongwith cooking ingredients.	
17	<b>COMMUNITY PARTICIPATION:</b>  <b>Extent of participation by Parents/VECs/Panchayats/Urban bodies in daily supervision, monitoring, participation</b>	Discussion with head teacher, teacher, VEC, Gram Panchayat members  (Done as required)
	The community participation in the MDM scheme is another area which requires urgent strengthening as poor community participation was noticed in about 50% of the visited schools.	
18	<b>INSPECTION &amp; SUPERVISION</b>  <b>Has the mid day meal programme been inspected by any state/district/block level officers/officials?</b>	School records, discussion with head teacher, teachers, VEC, Gram Panchayat members  (Done as required)
	All the visited schools were inspected by the block level officials mainly by CRC and BRCs.	
19	<b>IMPACT</b>  <b>Has the mid day meal improved the enrollment, attendance of children in school, general well being (nutritional status) of children? Is there any other incidental benefits due to serving cooked meal in schools.</b>	School records, discussion with head teacher, teachers, students, VEC, Gram Panchayat members.  (Done as required)
	Although no data can be gathered to attribute the increase in enrollment if any, is there to mid day meal only but there is no doubt that MDM is helping in increasing the enrollment and attendance of the children. Besides this it also bridges the gap and results in bringing about social justice because children belonging to different castes enjoy taking MDM collectively in a place which sets aside the feeling of discrimination.	

## District : Rudraprayag

(i)	<b>Name of the Monitoring Institution</b>	National Institute of Administrative Research, LBSNAA, Mussoorie
(ii)	<b>Period of the report</b>	April, 2012– September, 2012
(iii)	<b>Name of the District</b>	Rudraprayag
(iv)	<b>Date of visit to the Districts/EGS/Schools</b>	-

1	<b><u>REGULARITY IN SERVING MEAL:</u></b>		Students, Teachers & Parents	
	<p><b>Whether the school is serving hot cooked meal daily? If there was interruption, what was the extent and reasons for the same?</b></p> <p>All visited schools were serving hot cooked mid day meal to all the students present in the school. However, the teachers inform in 3 schools that there were instances when mid day meal was not served due to non-availability of food grains.</p>			
2	<b><u>TRENDS:</u></b>		School level registers, MDM Registers Head Teachers, Schools level MDM functionaries / Observation of the monitoring team.	
	<b>Details</b>	<b>Day previous to date of visit</b>		<b>On the day of visit</b>
	<b>Enrollment</b>	1530		1530
	<b>No. of children attending the school on the day of visit</b>	1365		1288
	<b>No. of children availing MDM as per MDM Register</b>	1365		1288
	<b>No. of children actually availing MDM on the day of visit</b>		1288	
3	<b><u>REGULARITY IN DELIVERING FOOD GRAINS TO SCHOOL LEVEL:</u></b>		School level registers, MDM Registers, Head Teacher, School level MDM functionaries.	
	<p><b>• Is school receiving food grain regularly? If there is delay in delivering food grains, what is the extent of delay and reasons for the same?</b></p> <p>95% of the visited schools are receiving food grain regularly.</p>			

	<ul style="list-style-type: none"> <li>• <b>Is buffer stock of one-month's requirement is maintained?</b></li> </ul>	School level registers, MDM Registers, Head Teacher, School level MDM functionaries
	Buffer stock was maintained in 68% of the visited schools.	
	<ul style="list-style-type: none"> <li>• <b>Is the food grains delivered at the school?</b></li> </ul>	School level registers, MDM Registers, Head Teacher, School level MDM functionaries
	Foodgrains were delivered at the school doorsteps in 50% visited schools in rest of the schools the foodgrains were to be carried from the PDS shop.	
4	<u><b>REGULARITY IN DELIVERING COOKING COST TO SCHOOL LEVEL:</b></u>	School level registers, MDM Registers, Head Teacher, School level MDM functionaries.
	<ul style="list-style-type: none"> <li>• <b>Is school receiving cooking cost in advance regularly? If there is delay in delivering cooking cost what is the extent of delay and reasons for it?</b></li> </ul>	
	38 schools out of the sampled 40 schools have received cooking cost in advance most of the times.	
	<ul style="list-style-type: none"> <li>• <b>In case of delay, how schools manage to ensure that there is no disruption in the feeding programme?</b></li> </ul>	School level registers, MDM Registers, Head Teacher, School level MDM functionaries.
	The teachers manage it on credit basis from local ration shopkeeper or from their own pocket.	
	<ul style="list-style-type: none"> <li>• <b>Is cooking cost paid by Cash or through banking channel?</b></li> </ul>	School level registers, MDM Registers, Head Teacher, School level MDM functionaries.
	Through banking channel (by cheque).	
5	<u><b>SOCIAL EQUITY:</b></u>	Observations
	<b>Did you observe any gender or caste or community discrimination in cooking or serving or seating arrangements?</b>	
	There was no discrimination noticed among all the sample schools visited by MI.	
6	<u><b>VARIETY OF MENU:</b></u>	Observations and discussion with children teachers, parents, VEC members, Gram Panchayat members and cooks.
	<ul style="list-style-type: none"> <li>• <b>Has the school displayed its weekly menu, and is it able to adhere to the menu displayed?</b></li> </ul>	
	Menu was displayed in 95% of the visited schools on the notice board or wall and it was adhere to in 28% of the schools.	
7	<ul style="list-style-type: none"> <li>• <b>Is there variety in the food served or is the same food served daily?</b></li> </ul>	Observations and discussion with children teachers, parents, VEC members, Gram Panchayat members and cooks.
	Generally the schools serve rice and pulse everyday but a little variety in serving food was noticed in all the visited schools.	

	<ul style="list-style-type: none"> <li>• Dose the daily menu include rice / wheat preparation, dal and vegetables?</li> </ul>	Observations and discussion with children teachers, parents, VEC members, Gram Panchayat members and cooks.
	Rice, Dal and sometimes vegetables are included in daily menu.	
8	<b><u>QUALITY &amp; QUANTITY OF MEAL:</u></b>  <b>Feedback from children on</b> <ul style="list-style-type: none"> <li>• Quality of meal:</li> </ul>	Observations of Investigation during MDM service
	The overall quality of meal was generally good in all the visited school.	
	<ul style="list-style-type: none"> <li>• Quantity of meal:</li> </ul>	Observations of Investigation during MDM service
	Quantity of mid day meal was noticed sufficient	
	<ul style="list-style-type: none"> <li>• {If children were not happy Please give reasons and suggestions to improve.}</li> </ul>	Observations of Investigation during MDM service
Children were quite happy with the quality and quantity of food.		
9	<b><u>SUPPLEMENTARY:</u></b>  <ul style="list-style-type: none"> <li>• Whether children are given micronutrients (Iron, folic acid, vitamin – A dosage) and de-worming medicine periodically?</li> </ul>	Teachers, Students, School Record
	Micronutrients (Iron folic acid, vitamin – A dosage) and de-worming medicine were distributed in only 50% schools.	
	<ul style="list-style-type: none"> <li>• Who administers these medicines and at what frequency?</li> </ul>	Teachers, Students, School Record
	Nearest Govt. doctor or ANM. Administers them half yearly	
	<ul style="list-style-type: none"> <li>• Is there school Health Card maintained for each child?</li> </ul>	Teachers, Students, School Record
School health cards were maintained in 75% schools.		
10	<b><u>STATUS OF COOKS:</u></b>  <ul style="list-style-type: none"> <li>• Who cooks and serves the meal? (Cook/helper appointed by the Department or Self Help Group, or NGO or Contractor)</li> </ul>	Observations and discussion with children teachers, parents, VEC members, Gram Panchayat members and cooks.
	Cook cum helpers engaged by department and SMC serve the meals.	

	<ul style="list-style-type: none"> <li>Is the number of cooks and helpers adequate to meet the requirement of the school?</li> </ul>	<p>Observations and discussion with children teachers, parents, VEC members, Gram Panchayat members and cooks.</p> <p>(Done as required)</p>
	Yes, the cook cum helpers were adequate to meet the requirement of the school.	
	<ul style="list-style-type: none"> <li>What is remuneration paid to cooks/helpers?</li> </ul>	<p>Observations and discussion with children teachers, parents, VEC members, Gram Panchayat members and cooks.</p>
	The cooks are paid Rs. 1500/- per month.	
	<ul style="list-style-type: none"> <li>Are the remuneration paid to cooks/helpers regularly?</li> </ul>	<p>Observations and discussion with children teachers, parents, VEC members, Gram Panchayat members and cooks.</p>
	The cook cum helpers in all the visited schools informed that they were receiving the honorarium regularly.	
	<ul style="list-style-type: none"> <li>(Social Composition of cooks /helpers? (SC/ST/OBC/Minority)</li> </ul>	<p>Observations and discussion with children teachers, parents, VEC members, Gram Panchayat members and cooks.</p>
	Cook cum helpers in most of the schools were belonged to SC and OBC category.	
11	<p><b><u>INFRASTRUCTURE:</u></b></p> <p><b>Is a pucca kitchen shed-cum-store:</b></p> <ul style="list-style-type: none"> <li>Constructed and in use</li> <li>Constructed but not in use under</li> <li>Under construction</li> <li>Sanctioned, but constructed not started</li> <li>Not sanctioned</li> </ul> <p><b>Any other (specify)</b></p>	<p>School records, discussion with head teacher, teacher, VEC, Gram Panchayat members.</p>
	Pucca kitchen cum store were available in 98% of the visited schools, kachcha kitchen sheds were available in 2% of the visited schools.	
12	<p><b>In case the pucca kitchen shed is not available, where is the food being cooked and where are the foodgrains/other ingredients being stored.</b></p>	<p>Discussion with head teacher, teacher, VEC, Gram Panchayat members, Observation</p>
	In the sample schools where pucca kitchen is not available food is cooked either in open space in verandah and food grains/other ingredients are stored in a temporary kitchen cum shed provided by state govt. or in the head teacher's office.	
13	<p><b>Whether potable water is available for cooking and drinking purpose?</b></p>	-do-
	Yes, adequate kitchen devices were available in all the visited schools.	
14	<p><b>Whether utensils used for cooking food are adequate?</b></p>	Teachers/Organizer of MDM Programme

	Yes	
15	<b>What is the kind of fuel used? (Gas based/firewood etc.)</b>	Observation
	LPG was used in 8% visited schools and in rest of the schools firewood etc. was used for preparing mid day meal.	
16	<b><u>SAFETY &amp; HYGIENE:</u></b>	Observation
	<ul style="list-style-type: none"> <li><b>General Impression of the environment, Safety and hygiene:</b></li> </ul>	
	During the visit it was noticed that only 50% of the visited school were fulfilling the indicator of cooking and serving the food in neat, hygienic as well as safe conditions.	
	<ul style="list-style-type: none"> <li><b>Are children encouraged to wash hands before and after eating</b></li> </ul>	Observation
	Children were encouraged to wash hands before and after eating in all of the visited schools.	
	<ul style="list-style-type: none"> <li><b>Do the children partake meals in an orderly manner?</b></li> </ul>	Observation
	Yes, children in most of the visited schools were taking mid day meal in orderly manner.	
	<ul style="list-style-type: none"> <li><b>Conservation of water?</b></li> </ul>	Observation
Efforts were made in all the schools to conserve water and teachers encourage students to save water.		
<ul style="list-style-type: none"> <li><b>Is the cooking process and storage of fuel safe, not posing any fire hazard?</b></li> </ul>	Observation	
In about 60% of the visited schools visited MI found that the cooking process and fuel storage was and safe was not posing fire hazard. However, in 40% of the visited schools it was not safe as the meals were either cooked in open or the makeshift kitchen was so small and very near to the classrooms and there is strong need for safe storage of fuel along with cooking ingredients.		
17	<b>COMMUNITY PARTICIPATION:</b>	Discussion with head teacher, teacher, VEC, Gram Panchayat members
	<b>Extent of participation by Parents/VECs/Panchayats/Urban bodies in daily supervision, monitoring, participation</b>	(Done as required)
	There was satisfactory community participation noticed in about 90% of the visited schools,	
18	<b>INSPECTION &amp; SUPERVISION</b>	School records, discussion with head teacher, teachers, VEC, Gram Panchayat members
	<b>Has the mid day meal programme been inspected by any state/district/block level officers/officials?</b>	(Done as required)
	All the visited schools were inspected by the block level officials mainly by CRC and BRCs.	



19	<p><b>IMPACT</b></p> <p><b>Has the mid day meal improved the enrollment, attendance of children in school, general well being (nutritional status) of children? Is there any other incidental benefits due to serving cooked meal in schools.</b></p>	<p>School records, discussion with head teacher, teachers, students, VEC, Gram Panchayat members.</p> <p>(Done as required)</p>
	<p>Although no data can be gathered to attribute the increase in enrollment if any, is there to mid day meal only but there is no doubt that MDM is helping in increasing the enrollment and attendance of the children. Besides this it also bridges the gap and results in bringing about social justice because children belonging to different castes enjoy taking MDM collectively in a place which sets aside the feeling of discrimination.</p>	

## District : Bageshwar

(i)	<b>Name of the Monitoring Institution</b>	National Institute of Administrative Research, LBSNAA, Mussoorie
(ii)	<b>Period of the report</b>	April, 2012– September, 2012
(iii)	<b>Name of the District</b>	Bageshwar
(iv)	<b>Date of visit to the Districts/EGS/Schools</b>	

1	<b><u>REGULARITY IN SERVING MEAL:</u></b>		Students, Teachers & Parents	
	<p><b>Whether the school is serving hot cooked meal daily? If there was interruption, what was the extent and reasons for the same?</b></p> <p>All visited schools were serving hot cooked mid day meal to all the students present in the school.</p>			
2	<b><u>TRENDS:</u></b>		School level registers, MDM Registers Head Teachers, Schools level MDM functionaries / Observation of the monitoring team.	
	<b>Details</b>	<b>Day previous to date of visit</b>		<b>On the day of visit</b>
	<b>Enrollment</b>	1581		1581
	<b>No. of children attending the school on the day of visit</b>	1414		1386
	<b>No. of children availing MDM as per MDM Register</b>	1414		1386
<b>No. of children actually availing MDM on the day of visit</b>		1386		
3	<b><u>REGULARITY IN DELIVERING FOOD GRAINS TO SCHOOL LEVEL:</u></b>		School level registers, MDM Registers, Head Teacher, School level MDM functionaries.	
	<p><b>• Is school receiving food grain regularly? If there is delay in delivering food grains, what is the extent of delay and reasons for the same?</b></p> <p>98% of the visited schools are receiving food grain regularly.</p>			

	<ul style="list-style-type: none"> <li>• <b>Is buffer stock of one-month's requirement is maintained?</b></li> </ul>	School level registers, MDM Registers, Head Teacher, School level MDM functionaries
	Buffer stock was maintained in 75% of the visited schools.	
	<ul style="list-style-type: none"> <li>• <b>Is the food grains delivered at the school?</b></li> </ul>	School level registers, MDM Registers, Head Teacher, School level MDM functionaries
	Foodgrains were delivered at the school doorsteps in 78% visited schools in rest of the schools the foodgrains were to be carried from the PDS shop.	
4	<b><u>REGULARITY IN DELIVERING COOKING COST TO SCHOOL LEVEL:</u></b>	School level registers, MDM Registers, Head Teacher, School level MDM functionaries.
	<ul style="list-style-type: none"> <li>• <b>Is school receiving cooking cost in advance regularly? If there is delay in delivering cooking cost what is the extent of delay and reasons for it?</b></li> </ul>	
	98% sampled schools received cooking cost in advance most of the times.	
	<ul style="list-style-type: none"> <li>• <b>In case of delay, how schools manage to ensure that there is no disruption in the feeding programme?</b></li> </ul>	School level registers, MDM Registers, Head Teacher, School level MDM functionaries.
	In case of delay in receipt of cooking cost, the teachers manage it on credit basis from local ration shopkeeper or from their own pocket.	
	<ul style="list-style-type: none"> <li>• <b>Is cooking cost paid by Cash or through banking channel?</b></li> </ul>	School level registers, MDM Registers, Head Teacher, School level MDM functionaries.
	Through banking channel (by cheque).	
5	<b><u>SOCIAL EQUITY:</u></b>	Observations
	<ul style="list-style-type: none"> <li>• <b>Did you observe any gender or caste or community discrimination in cooking or serving or seating arrangements?</b></li> </ul>	
	There was no discrimination noticed among all the sample schools visited by MI.	

6	<p><b><u>VARIETY OF MENU:</u></b></p> <ul style="list-style-type: none"> <li>• <b>Has the school displayed its weekly menu, and is it able to adhere to the menu displayed?</b></li> </ul>	Observations and discussion with children teachers, parents, VEC members, Gram Panchayat members and cooks.
	Menu was displayed in 95% of the visited schools on the notice board or wall and it was adhere to in 92% schools.	
7	<ul style="list-style-type: none"> <li>• <b>Is there variety in the food served or is the same food served daily?</b></li> </ul>	Observations and discussion with children teachers, parents, VEC members, Gram Panchayat members and cooks.
	Generally the schools serve rice and pulse everyday but a little variety in serving food was noticed in all the visited schools.	
	<ul style="list-style-type: none"> <li>• <b>Dose the daily menu include rice / wheat preparation, dal and vegetables?</b></li> </ul>	Observations and discussion with children teachers, parents, VEC members, Gram Panchayat members and cooks.
Rice, Dal and sometimes vegetables are included in daily menu.		
8	<p><b><u>QUALITY &amp; QUANTITY OF MEAL:</u></b></p> <p><b>Feedback from children on</b></p> <ul style="list-style-type: none"> <li>• <b>Quality of meal:</b></li> </ul>	Observations of Investigation during MDM service
	The overall quality of meal was generally good in all the visited school.	
	<ul style="list-style-type: none"> <li>• <b>Quantity of meal:</b></li> </ul>	Observations of Investigation during MDM service
	Quantity of mid day meal was noticed sufficient	
	<ul style="list-style-type: none"> <li>c){If children were not happy Please give reasons and suggestions to improve.}</li> </ul>	Observations of Investigation during MDM service
Children were quite happy with the quality and quantity of food.		

9	<b><u>SUPPLEMENTARY:</u></b>	Teachers, Students, School Record
	<ul style="list-style-type: none"> <li>• Whether children are given micronutrients (Iron, folic acid, vitamin – A dosage) and de-worming medicine periodically?</li> </ul>	
	Micronutrients (Iron, folic acid, vitamin – A dosage) and de-worming medicine were distributed in around 40% of the visited schools.	
	<ul style="list-style-type: none"> <li>• Who administers these medicines and at what frequency?</li> </ul>	Teachers, Students, School Record
	Nearest Govt. doctor or ANM. Administers them half yearly	
10	<ul style="list-style-type: none"> <li>• Is there school Health Card maintained for each child?</li> </ul>	Teachers, Students, School Record
	School health cards were maintained in 22% visited schools.	
	<b><u>STATUS OF COOKS:</u></b>	Observations and discussion with children teachers, parents, VEC members, Gram Panchayat members and cooks.
	<ul style="list-style-type: none"> <li>• Who cooks and serves the meal? (Cook/helper appointed by the Department or Self Help Group, or NGO or Contractor)</li> </ul>	
	Cook cum helpers engaged by department and SMC serve the meals.	
	( ii ) Is the number of cooks and helpers adequate to meet the requirement of the school?	Observations and discussion with children teachers, parents, VEC members, Gram Panchayat members and cooks.  (Done as required)
	Yes, the cook cum helpers were adequate to meet the requirement of the school.	
	( iii )What is remuneration paid to cooks/helpers?	Observations and discussion with children teachers, parents, VEC members, Gram Panchayat members and cooks.
	The cooks are paid Rs. 1500/- per month.	
	( iv).Are the remuneration paid to cooks/helpers regularly?	Observations and discussion with children teachers, parents, VEC members, Gram Panchayat members and cooks.

	The cook cum helpers in 93% of the visited schools informed that they were receiving the honorarium regularly.	
	<b>v) Social Composition of cooks /helpers? (SC/ST/OBC/Minority)</b>	Observations and discussion with children teachers, parents, VEC members, Gram Panchayat members and cooks.
	Cook cum helpers in most of the schools were belonged to SC and OBC category.	
11	<b><u>INFRASTRUCTURE:</u></b> <b>Is a pucca kitchen shed-cum-store:</b> <ul style="list-style-type: none"> <li>• Constructed and in use</li> <li>• Constructed but not in use under</li> <li>• Under construction</li> <li>• Sanctioned, but constructed not started</li> <li>• Not sanctioned</li> </ul> <b>Any other (specify)</b>	School records, discussion with head teacher, teacher, VEC, Gram Panchayat members.
	Pucca kitchen cum store were available in 98% of the visited schools.	
12	<b>In case the pucca kitchen shed is not available, where is the food being cooked and where are the foodgrains/other ingredients being stored.</b>	Discussion with head teacher, teacher, VEC, Gram Panchayat members, Observation
	In the sample schools where pucca kitchen is not available food is cooked either in open space in verandah and food grains/other ingredients are stored in a temporary kitchen cum shed provided by state govt. or in the head teacher's office.	
13	<b>Whether potable water is available for cooking and drinking purpose?</b>	<b>-do-</b>
	Yes, adequate kitchen devices were available in all the visited schools.	
14	<b>Whether utensils used for cooking food are adequate?</b>	Teachers/Organizer of MDM Programme
	Yes	
15	<b>What is the kind of fuel used? (Gas based/firewood etc.)</b>	Observation
	LPG was used in 30% visited schools and in rest of the schools firewood etc. was used for preparing mid day meal.	

16	<b><u>SAFETY &amp; HYGIENE:</u></b>	Observation
	<ul style="list-style-type: none"> <li>• <b>General Impression of the environment, Safety and hygiene:</b></li> </ul>	
	During the visit it was noticed that 80% of the visited school were fulfilling the indicator of cooking and serving the food in neat, hygienic as well as safe conditions.	
	<b>ii.Are children encouraged to wash hands before and after eating</b>	Observation
	Children were encouraged to wash hands before and after eating in 98% of the visited schools.	
	<b>ii.Do the children partake meals in an orderly manner?</b>	Observation
	Yes, children in most of the visited schools were taking mid day meal in orderly manner.	
	<b>iv. Conservation of water?</b>	Observation
Efforts were made in all the schools to conserve water and teachers encourage students to save water.		
<b>i. Is the cooking process and storage of fuel safe, not posing any fire hazard?</b>	Observation	
In about 75% of the visited schools visited MI found that the cooking process and fuel storage was and safe was not posing fire hazard. However, in 25% of the visited schools it was not safe as the meals were either cooked in open or the makeshift kitchen was so small and very near to the classrooms and there is strong need for safe storage of fuel alongwith cooking ingredients.		
17	<b>COMMUNITY PARTICIPATION:</b>	Discussion with head teacher, teacher, VEC, Gram Panchayat members
	<b>Extent of participation by Parents/VECs/Panchayats/Urban bodies in daily supervision, monitoring, participation</b>	(Done as required)
There was good community participation noticed in about 84% of the visited schools, however in rest of the visited schools the community participation requires strengthening.		
18	<b>INSPECTION &amp; SUPERVISION</b>	School records, discussion with head teacher, teachers, VEC, Gram Panchayat members
	<b>Has the mid day meal programme been inspected by any state/district/block level officers/officials?</b>	(Done as required)
All the visited schools were inspected by the block level officials mainly by CRC and BRCs.		

19	<p><b>IMPACT</b></p> <p><b>Has the mid day meal improved the enrollment, attendance of children in school, general well being (nutritional status) of children? Is there any other incidental benefits due to serving cooked meal in schools.</b></p>	<p>School records, discussion with head teacher, teachers, students, VEC, Gram Panchayat members.</p> <p>(Done as required)</p> <p>Although no data can be gathered to attribute the increase in enrollment if any, is there to mid day meal only but there is no doubt that MDM is helping in increasing the enrollment and attendance of the children. Besides this it also bridges the gap and results in bringing about social justice because children belonging to different castes enjoy taking MDM collectively in a place which sets aside the feeling of discrimination.</p>
----	---	--



**Details on vital parameters - District- Chamoli**

**ANNEXURE I**

S.No.	School	Interruption in MDM	Receiving of FG regularly	Maintenance of buffer stock for FG	Receipt of cooking cost in advance	Maintenance of School Health Card	Regularity in payment to CCH	Children encourage to wash hands before and after eating MDM
1.	P.S. Tedakhansaal (0205201)	Yes	No	No	Yes	No	No	No
2.	P.S. Ropa (204701)	No	Yes	No	No	No	Yes	Yes
3.	UPS Ropa (0204702)	No	No	No	Yes	Yes	No	No
4.	P.S. Papdiyada (0203501)	No	Yes	No	Yes	No	No	Yes
5.	UPS Girls Pathiyaldhar (0203505)	Yes	No	Yes	Yes	No	No	Yes
6.	P.S. Subhashnagar (0203305)	No	Yes	Yes	Yes	Yes	No	Yes
7.	P.S. Gopeshwar (Urban) (0202903)	No	Yes	Yes	Yes	Yes	No	Yes
8.	P.S. Sonla (0204901)	No	Yes	Yes	Yes	No	Yes	Yes
9	UPS Nailkudav (0202403)	No	No	No	Yes	Yes	No	Yes
10	P.S. Nailkudav (0202401)	Yes	No	No	Yes	No	No	Yes
11	P.S. Pakhi (0104102)	No	Yes	Yes	Yes	No	No	Yes
12	P.S. TangadiTalli (0104001)	No	Yes	Yes	Yes	No	No	Yes
13	UPS Tangadi (0104002)	No	Yes	No	Yes	No	Yes	Yes
14	PS Jalgwad (0104301)	No	Yes	Yes	Yes	Yes	No	Yes
15	P.S. Marwadi (0107301) (Urban)	No	Yes	No	Yes	No	No	Yes
16	UPS Marwadi (0107303)	No	Yes	No	Yes	Yes	No	Yes
17	PS Joshimath – I Adarsh (0107201)	No	Yes	Yes	Yes	No	No	Yes

18	P.S. Lambagar (0103007)	No	Yes	Yes	Yes	Yes	No	Yes
19	UPS Laambagad (0103008)	No	Yes	No	Yes	Yes	No	Yes
20	PS Mana I.	No	Yes	No	Yes	No	Yes	Yes
21.	P.S. Gorang (0108002)	No	Yes	Yes	Yes	No	No	Yes
22.	P.S. Tefana (0417101)	No	Yes	Yes	Yes	No	No	Yes
23.	PS Kameda (0415601)	No	Yes	Yes	Yes	No	No	Yes
24.	UPS Kameda (0415602)	Yes	No	Yes	No	No	No	Yes
25.	PS Dhirpaak (0416601)	No	Yes	Yes	Yes	Yes	No	Yes
26	PS Langasoo (0410204)	No	Yes	Yes	Yes	No	No	Yes
27	UPS Girls Langasoo (0410201)	No	Yes	Yes	Yes	No	No	Yes
28	PS Sonla (0401601)	No	Yes	No	Yes	No	No	Yes
29	UPS Sonla (0401602)	No	Yes	Yes	Yes	No	Yes	No
30	PS Gandhi Nagar (0400701)	No	Yes	Yes	Yes	No	No	Yes
31	PS Karnparyag I (0400801)	No	Yes	No	Yes	No	No	Yes
32	PS Karnparyag - II	No	No	No	Yes	No	No	Yes
33	PS Palethi (0400901)	No	Yes	No	Yes	No	No	Yes
34	UPS Ida Bathani (0400905)	No	Yes	No	Yes	No	No	Yes
35	P.S. Dhurma (0305101)	Yes	No	No	No	No	No	No
36	P.S. Banswada (0304301)	Yes	No	No	Yes	No	No	Yes
37	UPS Banswada (0304302)	No	Yes	Yes	Yes	No	No	Yes
38	PS Pharkhait (0306601)	Yes	No	No	No	No	No	Yes
39	PS Sera (0304401)	No	Yes	No	No	No	No	Yes
40	HS Girls Ghat 0307602	Yes	No	Yes	No	No	No	Yes

### Details on vital parameters - District- Rudraprayag

S.No.	School	Interruption in MDM	Receiving of FG regularly	Maintenance of buffer stock for FG	Receipt of cooking cost in advance	Maintenance of School Health Card	Regularity in payment to CCH	Children encourage to wash hands before and after eating MDM
1.	P.S. Belni (0122001)	No	Yes	Yes	Yes	Yes	Yes	Yes
2.	P.S. Bhanadhar (0122201)	No	Yes	Yes	Yes	Yes	Yes	Yes
3.	P.S. Rampur (0126901)	No	Yes	No	Yes	Yes	Yes	Yes
4.	P.S. Agastamuni(0100101)	No	Yes	No	No	Yes	Yes	Yes
5.	P.S. Tilwara(0126701)	No	Yes	No	Yes	Yes	Yes	Yes
6.	U.P.S. BhatwariSain (0122901)	No	Yes	No	Yes	Yes	Yes	Yes
7.	P.S. Bedubagad(0100301)	No	Yes	Yes	Yes	Yes	Yes	Yes
8.	U.P.S. Phalai(0119102)	No	Yes	Yes	Yes	No	Yes	Yes
9	P.S. Guraid(0122701)	No	Yes	Yes	Yes	Yes	Yes	Yes
10	U.P.S. Saur Guraid(0124101)	No	Yes	Yes	Yes	Yes	Yes	Yes
11	P.S. Rudraprayag(0122105)	No	Yes	Yes	Yes	Yes	Yes	Yes
12	U.P.S. Ratora(0121303)	No	Yes	Yes	Yes	No	Yes	Yes
13	P.S. Baniyari(0100401)	No	Yes	Yes	Yes	No	Yes	Yes
14	U.P.S. KottiLasya (020091)	No	Yes	No	Yes	No	Yes	Yes
15	P.S. GortiLasya (0200101)	No	Yes	Yes	Yes	Yes	Yes	Yes
16	U.P.S. Chaunra (0202702)	No	Yes	Yes	Yes	Yes	Yes	Yes
17	P.S. Chaunra (0202701)	No	Yes	No	Yes	No	Yes	Yes
18	P.S. Mamni (0200801)	No	Yes	No	Yes	Yes	Yes	Yes
19	P.S. Mayali(0201001)	No	Yes	Yes	Yes	Yes	Yes	Yes

20	P.S. HariyaliBhardar	No	Yes	Yes	Yes	Yes	Yes	Yes
21.	P.S. Jolly Silgadh (0207001)	No	Yes	No	Yes	Yes	Yes	Yes
22.	P.S. JainaKandhar (0206201)	No	Yes	Yes	Yes	Yes	Yes	Yes
23.	U.P.S. Dangi(0211102)	No	Yes	Yes	Yes	Yes	Yes	Yes
24.	U.P.S. Tuneta(0205002)	No	Yes	Yes	Yes	Yes	Yes	Yes
25.	P.S. Tuneta (0205001)	No	Yes	Yes	Yes	No	Yes	Yes
26	P.S. RatanGargh (0205902)	No	Yes	No	Yes	Yes	Yes	Yes
27	U.P.S. Bainoli (0205302)	No	Yes	No	Yes	Yes	Yes	Yes
28	P.S. Bainoli (205301)	No	Yes	No	Yes	Yes	Yes	Yes
29	P.S. Kotiyara (0202203)	No	Yes	No	Yes	Yes	Yes	Yes
30	P.S. Khat (0307601)	No	Yes	Yes	Yes	Yes	Yes	Yes
31	P.S. Dhani (0306501)	No	Yes	Yes	Yes	Yes	Yes	Yes
32	U.P.S. Sitapur (0308301)	Yes	No	Yes	Yes	No	Yes	Yes
33	U.P.S. ShersiBandasu (0307002)	No	Yes	Yes	Yes	Yes	Yes	Yes
34	P.S. Tirjugi Narayan (0307401)	Yes	No	No	Yes	Yes	Yes	Yes
35	U.P.S. Semi (0310102)	No	Yes	Yes	Yes	No	Yes	Yes
36	P.S. Semi (0310101)	No	Yes	Yes	Yes	Yes	Yes	Yes
37	P.S. Devagan (0305001)	No	Yes	Yes	No	Yes	Yes	Yes
38	P.S. Nala (0309701)	Yes	Yes	Yes	Yes	No	Yes	Yes
39	P.S. Hyund (0310401)	No	Yes	Yes	Yes	Yes	Yes	Yes
40	P.S. BhetSen (0310303)	No	Yes	Yes	Yes	No	Yes	Yes

### Details on vital parameters-District- Bageshwar

S.No.	School	Interruption in MDM	Receiving of FG regularly	Maintenance of buffer stock for FG	Receipt of cooking cost in advance	Maintenance of School Health Card	Regularity in payment to CCH	Children encourage to wash hands before and after eating MDM
1.	P.S. Rawaekhal (0115802)	No	Yes	Yes	Yes	No	Yes	Yes
2.	U.P.S. Bamradi (0115701)	No	Yes	Yes	Yes	No	Yes	Yes
3.	UPS Kamedi (0116502)	No	Yes	No	Yes	No	Yes	Yes
4.	P.S. Bamradi (0115702)	No	Yes	Yes	Yes	No	No	Yes
5.	PS Bahuli (0115603)	No	Yes	No	Yes	No	Yes	Yes
6.	P.S.Kamedi (0116501)	No	Yes	No	Yes	No	Yes	Yes
7.	P.S. Mahenarbhunga (0101202)	No	Yes	No	Yes	No	Yes	Yes
8.	P.S. Bageshwari (0100707)	No	Yes	Yes	Yes	No	No	Yes
9	P.S. Bageshwar(0100401)	No	Yes	No	Yes	No	Yes	Yes
10	P.S. Dayagan (0101301)	No	Yes	No	Yes	No	Yes	Yes
11	P.S. Bilona(0127702)	No	Yes	Yes	Yes	No	Yes	Yes
12	U.P.S. Pauridhar (0119802)	No	Yes	Yes	Yes	No	Yes	Yes
13	P.S. Palinikot (0101201)	No	Yes	No	Yes	No	Yes	Yes
14	P.S. Bageshwar II (0100103)	No	Yes	Yes	Yes	No	Yes	Yes
15	P.S. Binkholi (0304001)	No	Yes	Yes	Yes	Yes	Yes	Yes
16	U.P.S. Binkholi (0304002)	No	Yes	Yes	Yes	Yes	Yes	Yes
17	P.S. KotPhulwari (0304401)	No	Yes	Yes	Yes	Yes	Yes	Yes
18	P.S. Dundila (0301401)	No	Yes	Yes	No	Yes	Yes	Yes
19	P.S.Padiyarkhet (0305201)	No	Yes	Yes	Yes	No	Yes	Yes

20	P.S. Pachna(0302001 )	No	Yes	Yes	Yes	No	Yes	Yes
21.	P.S. Sitoli (0300501)	No	Yes	Yes	Yes	Yes	Yes	Yes
22.	P.S. Naughar (0300601)	No	Yes	Yes	Yes	No	Yes	Yes
23.	U.P.S. Bimola (0302102)	No	Yes	Yes	Yes	No	Yes	Yes
24.	U.P.S. Maldai (0314001)	No	Yes	Yes	Yes	Yes	Yes	Yes
25.	P.S. Bheta (0313501)	No	Yes	Yes	Yes	No	Yes	Yes
26	P.S. Dangoli (0304601)	No	Yes	Yes	Yes	No	No	Yes
27	U.P.S. Chorsau (0304202)	No	Yes	Yes	Yes	No	Yes	Yes
28	U.P.S. PhulwariGoonth	No	No	Yes	Yes	No	Yes	Yes
29	U.P.S. Girls PhulwariGoonth (0202404)	No	Yes	Yes	Yes	No	Yes	Yes
30	P.S. Golna (0209501)	No	Yes	Yes	Yes	No	Yes	Yes
31	P.S. Bhayu (0208801)	No	Yes	Yes	Yes	No	Yes	Yes
32	P.S. Reethabagad (0214201)	No	Yes	No	Yes	No	Yes	Yes
33	P.S. Harseela (0201902)	No	Yes	Yes	Yes	Yes	Yes	Yes
34	U.P.S. MallaGalona (0209504)	No	Yes	No	Yes	No	Yes	Yes
35	P.S. Utroda (0202402)	No	Yes	Yes	Yes	Yes	Yes	Yes
36	P.S. Timlabagad ( 0201801)	No	Yes	Yes	Yes	Yes	Yes	No
37	U.P.S. Timlabagad	No	Yes	No	Yes	No	Yes	Yes
38	G.U.P.S. Rainthal (0218301)	No	Yes	Yes	Yes	No	Yes	Yes
39	P.S. Anso (0209401)	No	Yes	Yes	Yes	No	Yes	Yes
40	P.S. Bilona Naveen (0121106)	No	Yes	Yes	Yes	No	Yes	Yes

**ANNEXURE II**

**List of School – District- Chamoli, Code-1  
Block – Dasholi, Code-1**

<b>S.No.</b>	<b>School</b>	<b>School Code</b>
1.	P.S. Tedakhansaal (0205201)	1
2.	P.S. Ropa (204701)	2
3.	UPS Ropa (0204702)	3
4.	P.S. Papdiyada (0203501)	4
5.	UPS Girls Pathiyaldhar (0203505)	5
6.	P.S. Subhashnagar (0203305)	6
7.	P.S. Gopeshwar (Urban) (0202903)	7
8.	P.S. Sonla (0204901)	8
9	UPS Nailkudav (0202403)	9
10	P.S. Nailkudav (0202401)	10
<b>Block – Joshimath, Code - 2</b>		
11	P.S. Pakhi (0104102)	11
12	P.S. Tangadi Talli (0104001)	12
13	UPS Tangadi (0104002)	13
14	PS Jalgwad (0104301)	14
15	P.S. Marwadi (0107301) (Urban)	15
16	UPS Marwadi (0107303)	16
17	PS Joshimath – I Adarsh (0107201)	17
18	P.S. Lambagar (0103007)	18
19	UPS Laambagad (0103008)	19
20	PS Mana I.	20
21.	P.S. Gorang (0108002)	21
<b>Block – Karnparyag, Code – 3</b>		
22.	P.S. Tefana (0417101)	22
23.	PS Kameda (0415601)	23
24.	UPS Kameda (0415602)	24
25.	PS Dhirpaak (0416601)	25
26	PS Langasoo (0410204)	26
27	UPS Girls Langasoo (0410201)	27

<b>28</b>	PS Sonla (0401601)	28
<b>29</b>	UPS Sonla (0401602)	29
<b>30</b>	PS Gandhi Nagar (0400701)	30
<b>31</b>	PS Karnparyag I (0400801)	31
<b>32</b>	PS Karnparyag – II	32
<b>33</b>	PS Palethi (0400901)	33
<b>34</b>	UPS Ida Bathani (0400905)	34
<b>Block – Ghat, Code - 4</b>		
<b>35</b>	P.S. Dhurma (0305101)	35
<b>36</b>	P.S. Banswada (0304301)	36
<b>37</b>	UPS Banswada (0304302)	37
<b>38</b>	PS Pharkhait (0306601)	38
<b>39</b>	PS Sera (0304401)	39
<b>40</b>	H.S. Girls Ghat (0307602)	40



**List of School – District- Bageshwar  
Block – Bageshwar Code -1**

S.No.	School	School Code
1.	P.S. Rawaekhal (0115802)	1
2.	U.P.S. Bamradi (0115701)	2
3.	UPS Kamedi (0116502)	3
4.	P.S. Bamradi (0115702)	4
5.	PS Bahuli (0115603)	5
6.	P.S.Kamedi (0116501)	6
7.	P.S. Mahenarbhunga (0101202)	7
8.	P.S. Bageshwari(0100707)	8
9	P.S. Bageshwar(0100401)	9
10	P.S. Dayagan(0101301)	10
11	P.S. Bilona(0127702)	11
12	U.P.S. Pauridhar(0119802)	12
13	P.S. Palinikot(0101201)	13
14	P.S. Bageshwar II(0100103)	14
<b>Block Garur Code - 2</b>		
15	P.S. Binkholi(0304001)	15
16	U.P.S. Binkholi(0304002)	16
17	P.S. Kot Phulwari(0304401)	17
18	P.S. Dundila(0301401)	18
19	P.S.Padiyarkhet(0305201)	19
20	P.S. Pachna(0302001)	20
21.	P.S. Sitoli (0300501)	21
22.	P.S. Naughar (0300601)	22
23.	U.P.S. Bimola (0302102)	23
24.	U.P.S. Maldai (0314001)	24
25.	P.S. Bheta (0313501)	25
26	P.S. Dangoli (0304601)	26
27	U.P.S. Chorsau (0304202)	27
28	U.P.S. Phulwari Goonth (SCHOOL CODE NOT ALLOWED)	28
<b>Block – Kapkot -3</b>		
29	U.P.S. Girls Phulwari Goonth (0202404)	29

<b>30</b>	P.S. Golna (0209501)	30
<b>31</b>	P.S. Bhayu (0208801)	31
<b>32</b>	P.S. Reethabagad (0214201)	32
<b>33</b>	P.S. Harseela(0201902)	33
<b>34</b>	U.P.S. Malla Galona(0209504)	34
<b>35</b>	P.S. Utroda (0202402)	35
<b>36</b>	P.S. Timlabagad(0201801)	36
<b>37</b>	U.P.S. Timlabagad (SCHOOL CODE NOT ALLOWED)	37
<b>38</b>	G.U.P.S. Rainthal (0218301)	38
<b>39</b>	P.S. Anso (0209401)	39
<b>40</b>	P.S. Bilona Naveen (0121106)	40

---

**List of School – District- Rudraprayag Code -3**

**Block – Augustmuni Code- 1**

<b>S.No.</b>	<b>School</b>	<b>School Code</b>
1.	P.S. Belni (0122001)	1
2.	P.S. Bhanadhar (0122201)	2
3.	P.S. Rampur (0126901)	3
4.	P.S. Agastamuni(0100101)	4
5.	P.S. Tilwara(0126701)	5
6.	U.P.S. Bhatwari Sain (0122901)	6
7.	P.S. Bedubagad(0100301)	7
8.	U.P.S. Phalai(0119102)	8
9	P.S. Guraid(0122701)	9
10	U.P.S. Saur Guraid(0124101)	10
11	P.S. Rudraprayag(0122105)	11
12	U.P.S. Ratora(0121303)	12
13	P.S. Baniyari(0100401)	13
<b>Block – Jakholi, Code-2</b>		
14	U.P.S. Kotti Lasya (020091)	14
15	P.S. Gorti Lasya (0200101)	15
16	U.P.S. Chaunra (0202702)	16
17	P.S. Chaunra (0202701)	17
18	P.S. Mamni (0200801)	18
19	P.S. Mayali(0201001)	19
20	P.S. Hariyali Bhardar (not allowed)	20
21.	P.S. Jolly Silgadh (0207001)	21
22.	P.S. Jaina Kandhar (0206201)	22
23.	U.P.S. Dangi(0211102)	23
24.	U.P.S. Tuneta(0205002)	24
25.	P.S. Tuneta (0205001)	25
26	P.S. Ratan Gargh (0205902)	26
27	U.P.S. Bainoli (0205302)	27
28	P.S. Bainoli (205301)	28
29	P.S. Kotiyara (0202203)	29
30	P.S. Khat (0307601)	30

<b>Block – Ukhimath, Code - 3</b>		
<b>31</b>	P.S. Dhani (0306501)	31
<b>32</b>	U.P.S. Sitapur (0308301)	32
<b>33</b>	U.P.S. Shersi Bandasu (0307002)	33
<b>34</b>	P.S. Tirjugi Narayan (0307401)	34
<b>35</b>	U.P.S. Semi (0310102)	35
<b>36</b>	P.S. Semi (0310101)	36
<b>37</b>	P.S. Devagan (0305001)	37
<b>38</b>	P.S. Nala (0309701)	38
<b>39</b>	P.S. Hyund (0310401)	39
<b>40</b>	P.S. Bhet Sen (0310303)	40

**Mid Day Meal**

ANNEXURE III

**Table 1****Regular serving of hot cooked meal (N=40)**

District	Yes	No	Total
Chamoli	30 (75.0)	10 (25.0)	40 (100.0)
Rudraparyag	37 (92.5)	3 (7.5)	40 (100.0)
Bageshwar	40 (100.0)	-	40 (100.0)

**Table 2****Trends of enrollment**

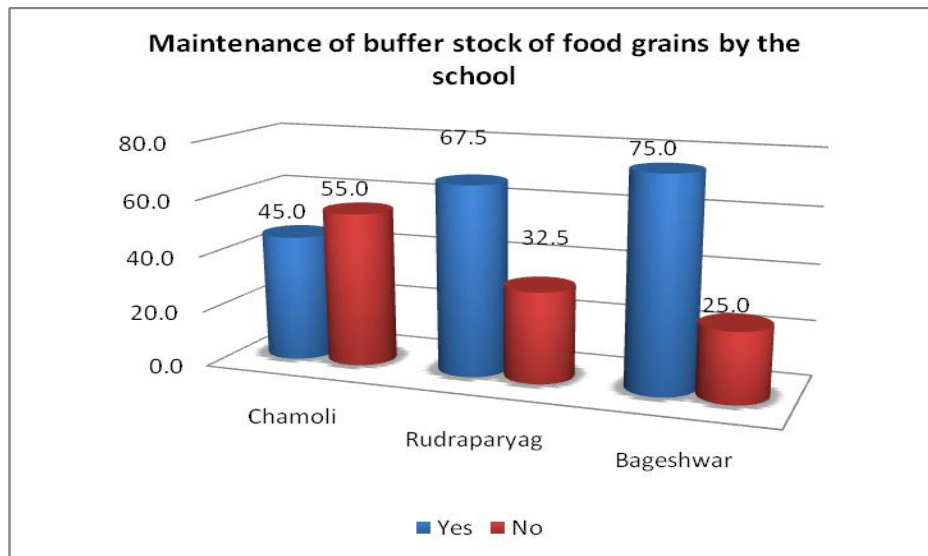
District	Total enrollment	No. of Children opted for Mid Day Meal	No. of children attending the school on the day of visit	No. of children availing MDM as per MDM Register	No. of children actually availing MDM on the day of visit	No. of children availed MDM on the previous day.
Chamoli	1401 (100.0)	1314 (93.8)	812 (57.9)	812 (57.9)	812 (57.9)	897 (64.0)
Rudraparyag	1530 (100.0)	1530 (100.0)	1288 (84.1)	1288 (84.1)	1288 (84.1)	1365 (89.2)
Bageshwar	1581 (100.0)	1581 (100.0)	1386 (87.7)	1386 (87.7)	1386 (87.7)	1414 (89.4)

**Table 3****Receipt of the food grains by the school**

District	Yes	No	Total
Chamoli	28 (70.0)	12 (30.0)	40 (100.0)
Rudraparyag	38 (95.0)	2 (5.0)	40 (100.0)
Bageshwar	39 (97.5)	1 (2.5)	40 (100.0)

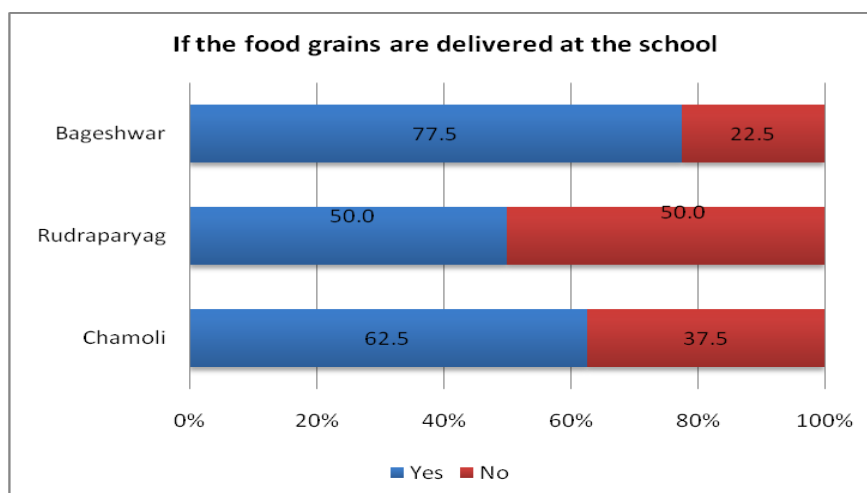
**Table 4****Maintenance of buffer stock of food grains by the school (N=40)**

District	Yes	No	Total
Chamoli	18 (45.0)	22 (55.0)	40 (100.0)
Rudraparyag	27 (67.5)	13 (32.5)	40 (100.0)
Bageshwar	30 (75.0)	10 (25.0)	40 (100.0)



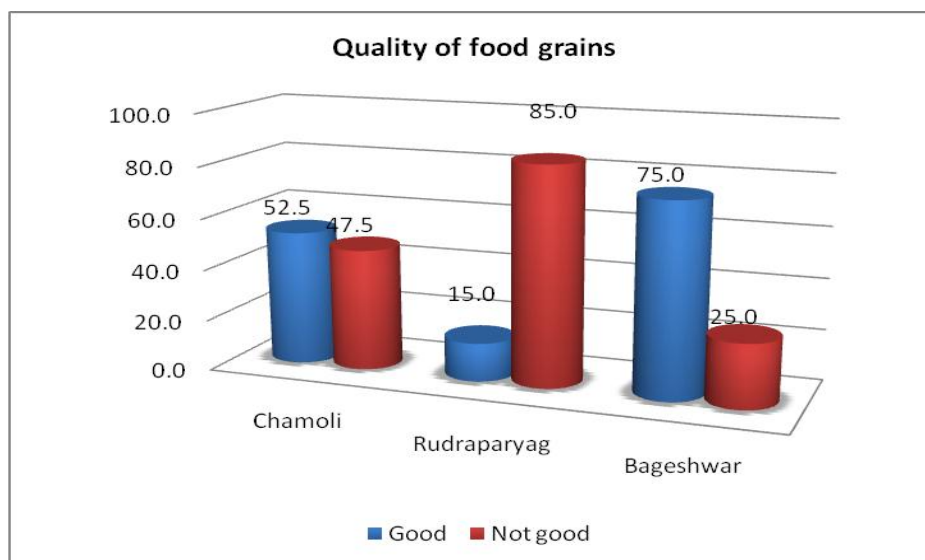
**Table 5**  
**If the food grains are delivered at the school (N=40)**

District	Yes	No	Total
Chamoli	25 (62.5)	15 (37.5)	40 (100.0)
Rudraparyag	20 (50.0)	20 (50.0)	40 (100.0)
Bageshwar	31 (77.5)	9 (22.5)	40 (100.0)



**Table 6**  
**Quality of food grains (N=40)**

District	Good	Not good	Total
Chamoli	21 (52.5)	19 (47.5)	40 (100.0)
Rudraparyag	6 (15.0)	34 (85.0)	40 (100.0)
Bageshwar	30 (75.0)	10 (25.0)	40 (100.0)



**Table 7**  
**Receipt of cooking cost in advance (N=40)**

District	Yes	No	Total
Chamoli	33 (82.5)	7 (17.5)	40 (100.0)
Rudraparyag	38 (95.0)	2 (5.0)	40 (100.0)
Bageshwar	39 (97.5)	1 (2.5)	40 (100.0)

**Table 8**  
**Any gender or caste or community discrimination in cooking or serving or seating arrangements (N=40)**

District	Yes	No	Total
Chamoli	-	40 (100.0)	40 (100.0)
Rudraparyag	2 (5.0)	38 (95.0)	40 (100.0)
Bageshwar	2 (5.0)	38 (95.0)	40 (100.0)

**Table 9**  
**Display of weekly menu at a noticeable place (N=40)**

<b>District</b>	<b>Yes</b>	<b>No</b>	<b>Total</b>
Chamoli	36 (90.0)	4 (10.0)	40 (100.0)
Rudraparyag	38 (95.0)	2 (5.0)	40 (100.0)
Bageshwar	38 (95.0)	2 (5.0)	40 (100.0)

**Table 10**  
**Adherence of menu (N=40)**

<b>District</b>	<b>Yes</b>	<b>No</b>	<b>Total</b>
Chamoli	19 (47.5)	21 (52.5)	40 (100.0)
Rudraparyag	11 (27.5)	29 (72.5)	40 (100.0)
Bageshwar	32 (80.0)	8 (20.0)	40 (100.0)

**Table 11**  
**Variety in the MDM served (N=40)**

<b>District</b>	<b>Yes</b>	<b>No</b>	<b>Total</b>
Chamoli	34 (85.0)	6 (15.0)	40 (100.0)
Rudraparyag	35 (87.5)	5 (12.5)	40 (100.0)
Bageshwar	37 (92.5)	3 (7.5)	40 (100.0)

**Table 12**  
**Maintenance of School Health Card (N=40)**

<b>District</b>	<b>Yes</b>	<b>No</b>	<b>Total</b>
Chamoli	9 (22.5)	31 (77.5)	40 (100.0)
Rudraparyag	30 (75.0)	10 (25.0)	40 (100.0)
Bageshwar	9 (22.5)	31 (77.5)	40 (100.0)



**Table 13**  
**Frequency of health check ups (N=40)**

District	Quarterly	Half yearly	Yearly	No check up	Total
Chamoli	-	-	27 (67.5)	13 (32.5)	40 (100.0)
Rudraparyag	6 (15.0)	1 (2.5)	23 (57.5)	10 (25.0)	40 (100.0)
Bageshwar	1 (2.5)	-	30 (75.0)	9 (22.5)	40 (100.0)

**Table 14**  
**Distribution of supplementary tablets etc. (N=40)**

District	Micronutrients N=40		Vit. A dosage N=40		Iron folic acid N=40		De-worming tablets N=40	
	Yes	No	Yes	No	Yes	No	Yes	No
Chamoli	24 (60.0)	16 (40.0)	24 (60.0)	16 (40.0)	26 (65.0)	14 (35.0)	18 (45.0)	22 (55.0)
Rudraparyag	28 (70.0)	12 (30.0)	20 (50.0)	20 (50.0)	24 (60.0)	16 (40.0)	4 (10.0)	36 (90.0)
Bageshwar	9 (22.5)	31 (77.5)	14 (35.0)	26 (65.0)	25 (62.5)	15 (37.5)	24 (60.0)	16 (40.0)

**Table 15**  
**Mode of payment to cook cum helper (N=40)**

District	In Cash	Through bank	Total
Chamoli	22 (55.0)	18 (45.0)	40 (100.0)
Rudraparyag	40 (100.0)	-	40 (100.0)
Bageshwar	31 (77.5)	9 (22.5)	40 (100.0)

**Table 16**  
**Regularity in payment of honorarium to cook cum helper (N=40)**

District	Regular	Irregular	Total
Chamoli	5 (12.5)	35 (87.5)	40 (100.0)
Rudraparyag	40 (100.0)	-	40 (100.0)
Bageshwar	37 (92.5)	3 (7.5)	40 (100.0)

**Table 17**  
**Availability of kitchen cum store in the school (N=40)**

District	Available	Not available	Total
Chamoli	38 (95.0)	2 (5.0)	40 (100.0)
Rudraparyag	39 (97.5)	1 (2.5)	40 (100.0)
Bageshwar	39 (97.5)	1 (2.5)	40 (100.0)

**Table 19**  
**Fuel used in cooking of mid day meal in the school (N=40)**

District	LPG	Fire wood	Any other	Total
Chamoli	4 (10.0)	1 (2.5)	35 (87.5)	40 (100.0)
Rudraparyag	3 (7.5)	2 (5.0)	35 (87.5)	40 (100.0)
Bageshwar	12 (30.0)	1 (2.5)	27 (67.5)	40 (100.0)

**Table 20**  
**Whether children are encouraged to wash hands before and after taking the meal (N=40)**

District	Yes	No	Total
Chamoli	36 (90.0)	4 (10.0)	40 (100.0)
Rudraparyag	40 (100.0)	-	40 (100.0)
Bageshwar	39 (97.5)	1 (2.5)	40 (100.0)

**Table 21**  
**Cooking process and storage of fuel safe, not posing any fire hazard**

District	Yes	No	Total
Chamoli	23 (57.5)	17 (42.5)	40 (100.0)
Rudraparyag	20 (50.0)	20 (50.0)	40 (100.0)
Bageshwar	22 (55.0)	18 (45.0)	40 (100.0)

**Table 22**  
**Community involvement in daily supervision and monitoring of MDM**

District	Excellent	Very good	Good	Satisfactory	Poor	Total
Chamoli	-	-	1 (2.5)	19 (47.5)	20 (50.0)	40 (100.0)
Rudraparyag	-	-	4 (10.0)	32 (80.0)	4 (10.0)	40 (100.0)
Bageshwar	-	-	-	34 (85.0)	6 (15.0)	40 (100.0)

**Table 23**  
**Roster for community members for monitoring of the MDM**

District	Yes	No	Total
Chamoli	1 (2.5)	39 (97.5)	40 (100.0)
Rudraparyag	-	40 (100.0)	40 (100.0)
Bageshwar	-	40 (100.0)	40 (100.0)

**Table 24**  
**Details of inspections of MDM**

District	State level officers N=40		District level officers N=40		Block level officers N=40	
	Yes	No	Yes	No	Yes	No
Chamoli	3 (7.5)	37 (92.5)	16 (40.0)	24 (60.0)	38 (95.0)	2 (5.0)
Rudraparyag	2 (5.0)	38 (95.0)	14 (35.0)	26 (65.0)	40 (100.0)	-
Bageshwar	-	40 (100.0)	10 (25.0)	30 (75.0)	38 (95.0)	2 (5.0)